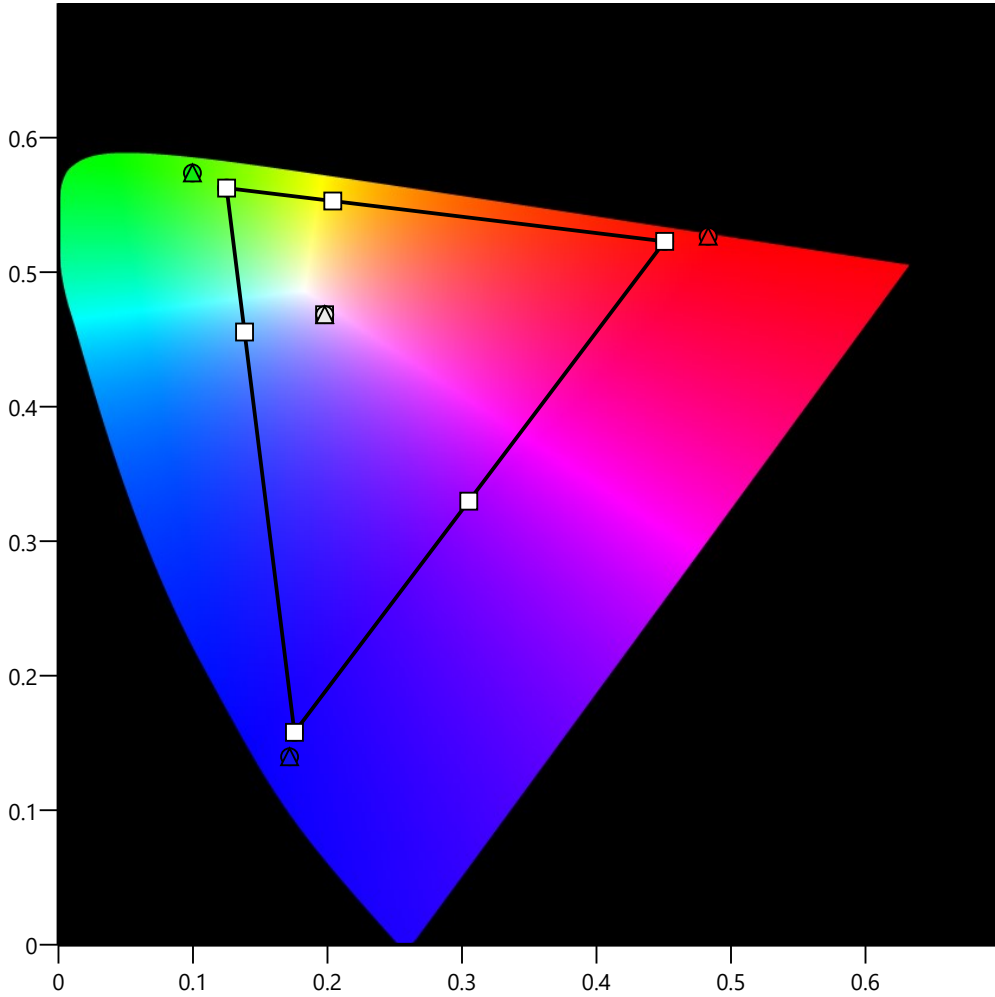
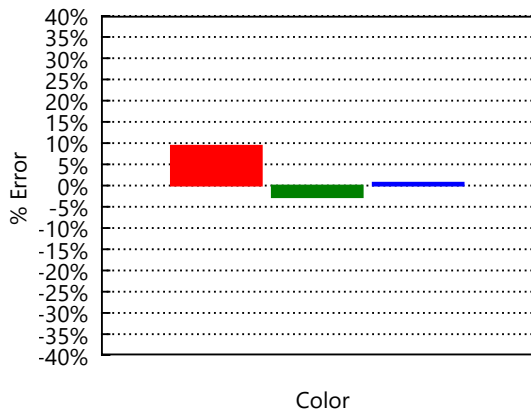


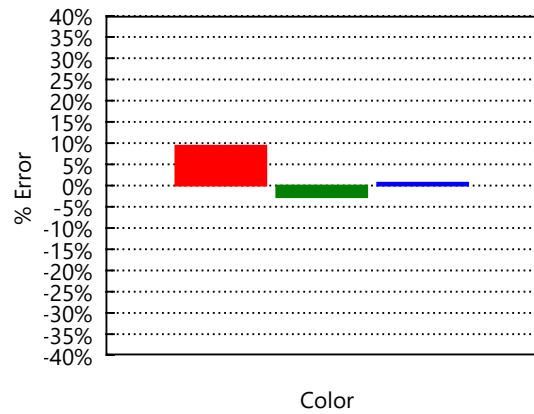
CIE 1976



Luminance Error (before)



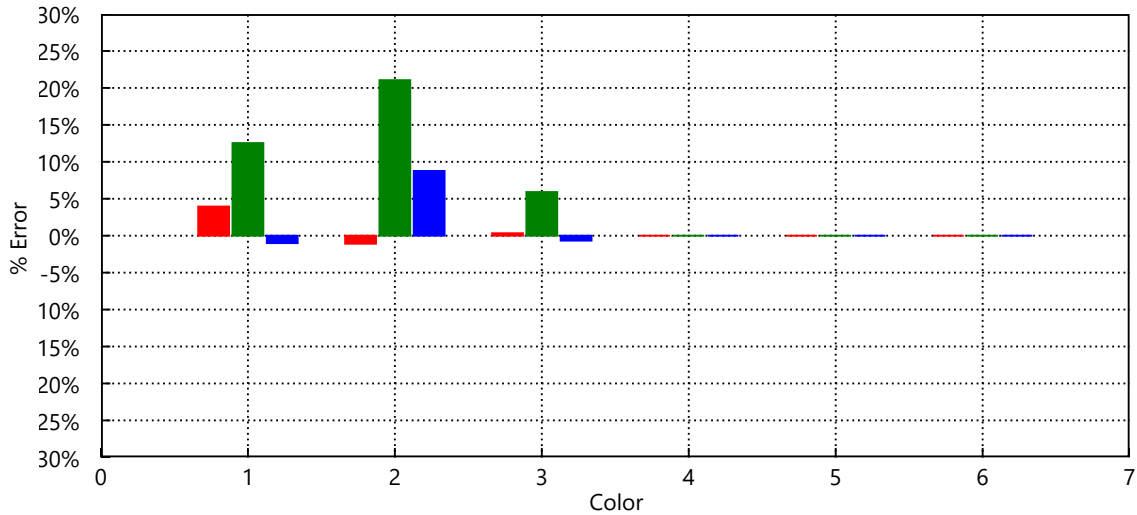
Luminance Error (after)



Primary/Secondary Colors Hue, Saturation, and Lightness Error

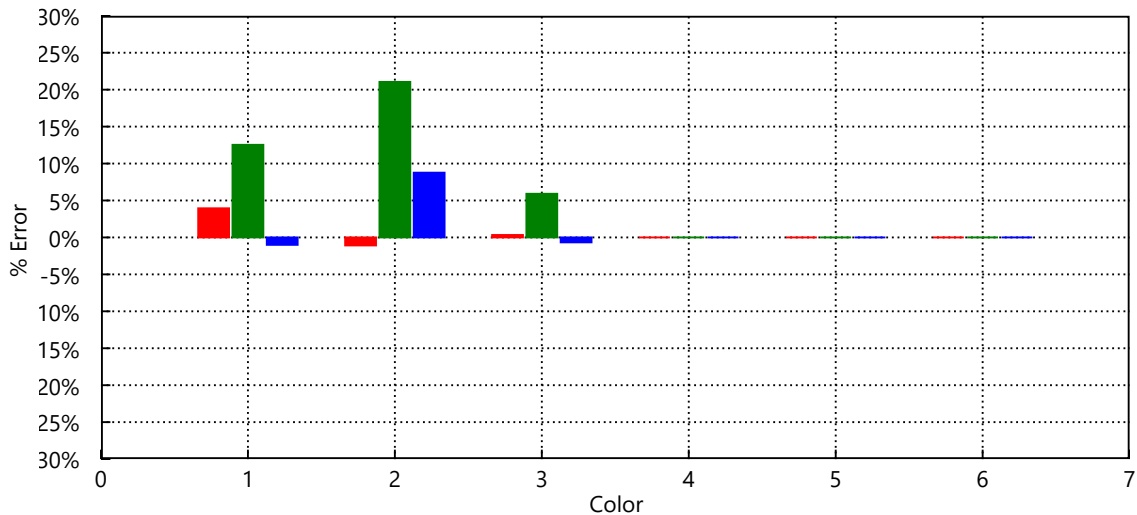
These charts display the before/after color errors of the primary/secondary colors in terms of the three visible components of color: Hue, Saturation, and Lightness (HSL). Ideally, all primary and secondary colors should have no more than 2% error in any component.

Chromaticity Error (Before)



	Red	Green	Blue	Yellow	Cyan	Magenta
Lightness	3.9%	-1.1%	0.3%	N/A	N/A	N/A
Saturation	12.5%	21.1%	5.9%	N/A	N/A	N/A
Hue	-1.0%	8.8%	-0.7%	N/A	N/A	N/A

Chromaticity Error (After)



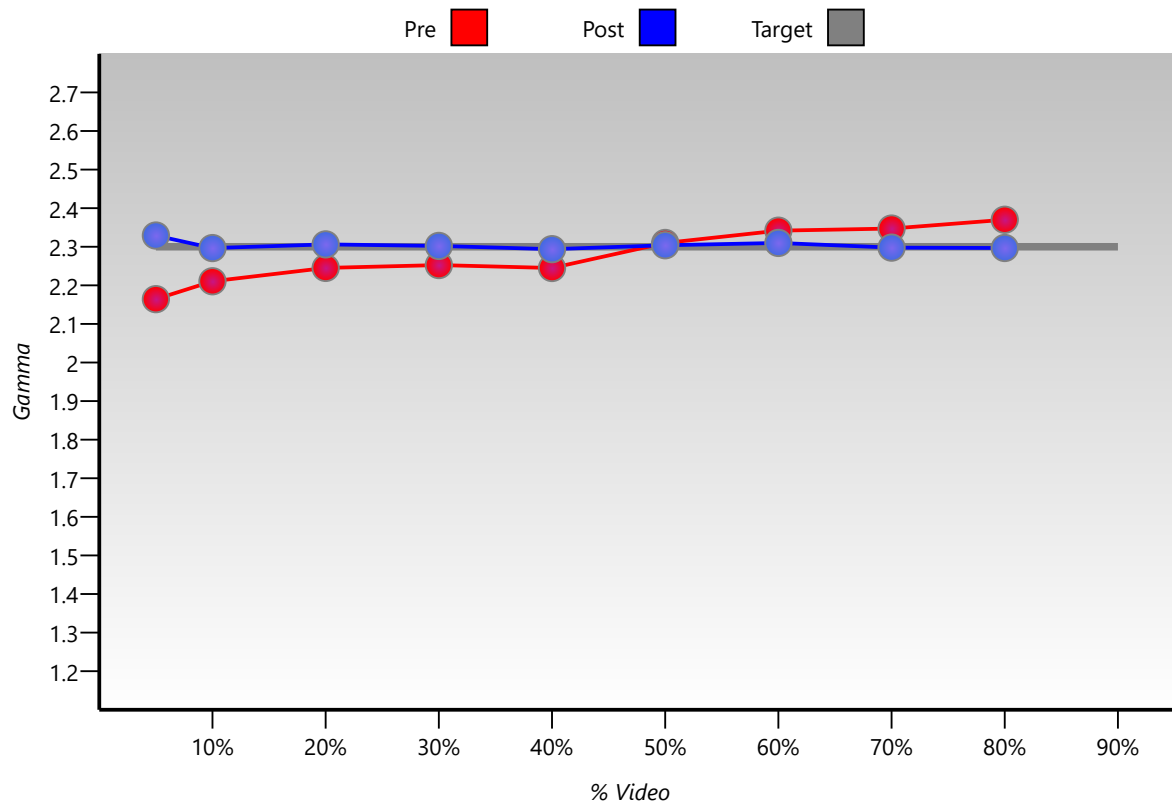
	Red	Green	Blue	Yellow	Cyan	Magenta
Lightness	3.9%	-1.1%	0.3%	N/A	N/A	N/A
Saturation	12.5%	21.1%	5.9%	N/A	N/A	N/A
Hue	-1.0%	8.8%	-0.7%	N/A	N/A	N/A

Gamma

Gamma describes the rate at which video output increases with signal input. This is not a one-to-one relationship. If gamma is too high, the image will darken and shadow detail will suffer. If gamma is too low, contrast and depth suffer.

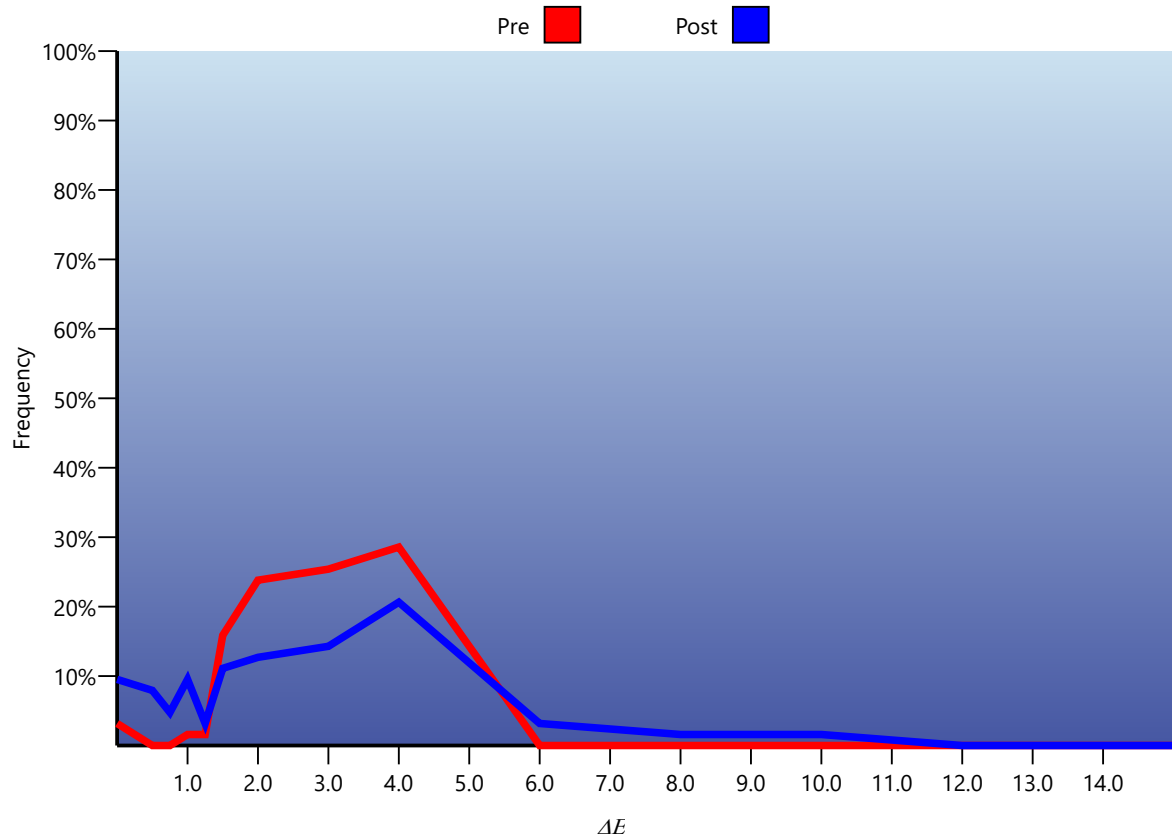
Luminance: cdm2

Target Gamma: 2.3



	Before			After		
	Output	Gamma	Video	Output	Gamma	Video
0%			0			0
10%	0.83 (0.6%)	2.21		0.68 (0.5%)	2.30	
20%	3.62 (2.7%)	2.25		3.28 (2.4%)	2.31	
30%	8.91 (6.6%)	2.25		8.39 (6.3%)	2.30	
40%	17.15 (12.8%)	2.24		16.40 (12.2%)	2.29	
50%	27.06 (20.2%)	2.31		27.17 (20.3%)	2.30	
60%	40.56 (30.2%)	2.34		41.23 (30.7%)	2.31	
70%	58.08 (43.3%)	2.35		59.11 (44.1%)	2.30	
80%	79.06 (58.9%)	2.37		80.36 (59.9%)	2.30	
90%	0.00 (0.0%)	0.00		0.00 (0.0%)	0.00	
100%	134.16 (100.0%)	0	0	134.16 (100.0%)	0	0
	Mean: 2.28			2.30		
	Contrast: 0.0		0.0			0.0

Advanced Auto Cal Report



ΔE	Pre	Post		
Excellent 0.0-1.0	3.2%	22.2%		
Very Good 1.0-1.5	3.2%	12.7%		
Good 1.5-2.0	15.9%	11.1%	Minimum	0.2 / 0.2
Average 2.0-3.0	23.8%	12.7%	Maximum	5.4 / 11.0
Poor +3.0	54.0%	41.3%	Average	3.1 / 2.9